



Recycling Authority
June 2024

20000 West Eight Mile Road | Southfield
248-208-2270 | www.rrrasoc.org



Yard Waste: More Than Just Waste



Nearly 30 years ago, Michigan legislature prohibited yard waste from landfill disposal. Today, when yard waste trucks collect your grass trimmings, sticks, and leaves from the curb, it is delivered to a local site where it will be composted and used for landscaping projects. Do you know why yard waste has its own collection trucks and is no longer placed in landfills?



Organics such as grass trimmings, leaves, and food waste **need oxygen in order to decompose into a nutrient-rich compost**. At compost facilities or in backyard composting bins, this is possible through "turning" the compost materials to ensure proper air circulation. When yard waste does not have access to oxygen, such as in a landfill, **anaerobic decomposition** takes place - that is, decomposition without oxygen. Anaerobic decomposition can be problematic due to the type of gas it creates in the process: **methane**, a potent greenhouse gas that can damage the ozone layer 20% faster than carbon dioxide. In turn, yard waste becomes a much more beneficial resource when composted at a local site.

Learn how to prepare your yard waste for collection via our [Yard Waste page](#).

Looking to start your own compost bin? View our Backyard Composting Guide [here!](#)



Grasscycling: An Easier, Healthier Alternative to Bagging

Grasscycling, a simple and natural approach to lawn care, is the practice of leaving grass clippings on the lawn or using them as mulch - no raking or bagging involved! Through decomposition, grass clippings release nitrogen and other valuable nutrients into the soil, resulting in a greener, healthier lawn without the use of fertilizer, pesticides, and herbicides.

In order to grasscycle, mow no more than 1 inch off your lawn when it is dry by using a mulching blade. Leave the grass clippings where they fall and allow them to

decompose. Any clippings that blow onto sidewalks or driveways can be swept back onto the lawn to prevent them from ending up in surface water or drains.

Interested in grasscycling and want to learn more? [Click here!](#)

Waste & Recycling Workers Week



Waste and Recycling Workers Week goes from June 17-24 this year! Thanks to the hard-working men and women of the waste and recycling industry, you don't have to give your garbage and recycling much thought once it's at the curb. The work of these unsung heroes requires consistent attention and effort, through both sunny days and adverse weather. Such work ensures that our communities remain safe and clean for all to enjoy!

Curbside collection crews, landfill and MRF workers, and even those working behind the scenes all play an important part in managing waste. Take **Waste and Recycling Workers Week** as an opportunity to thank the men and women who work daily in this industry with a card taped to your bin, a wave, or even a cold bottle of water. You can find more ideas on how to show your gratitude [here!](#)



WASTE & RECYCLING
WORKERS WEEK

You can also show your appreciation by following local disposal instructions (such as the [RRRASOC Recycling Guidelines](#)) – this ensures that our waste and recycling workers stay safe when handling household discards. For answers to frequently asked questions such as pick-up dates, cart replacement, and holiday delays, visit our [FAQ](#) page.



Switch to Reusable on World Refill Day



"Throwaway culture" and *"single-use culture"* are unfortunately common problems when it comes to introducing and encouraging sustainable alternatives to those less-involved in environmental issues. Globally, humans use millions of tons of plastic every year, which in turn is polluting our planet and impacting communities around the world.

On **June 16th** (or even today!), observe **World Refill Day** by making the switch to reusable, refillable water bottles. You might be surprised by how much less plastic you'll toss by following the first two R's, *reducing and reusing*, with this simple change. In the future, you may even want to try making the switch to reusable, refillable bottles for other household essentials such as soap, cleaners, shampoo, and more!

Learn more about why it's important to make the switch to reusable on the [World Refill](#)

2024 HHW Collection Event Dates

During the following HHW Collection Events, all residents of RRRASOC member communities are welcome to bring household hazardous waste for an opportunity to safely discard their hazardous items and e-waste. *Simple Recycling* and paper shredding services will also be available*.

July 13, 2024 ☐

Wixom Dept. of Public Works
2041 Charms Rd., Wixom
9:00am - 2:00pm

October 5, 2024

Novi Dept. of Public Works
26300 Lee BeGole Dr., Novi
9:00am - 2:00pm

October 26, 2024 ☐

RRRASOC MRF - Truck Entrance
20875 Mapleridge Ave., Southfield
9:00am - 2:00pm

***The T-shirt icon indicates an HHW Collection Event during which clothing, shoes, accessories, and small household items will be accepted by *Simple Recycling*.**

For more information about HHW events and how to prepare your items, please visit our [HHW page](#).

HHW Drop-Off at ERG Environmental Services

If you have HHW that you'd like to properly dispose of between collection events, you're in luck! Drop off your HHW without a fee at ERG Environmental Services during the following hours:

Monday - Friday:
9:00 AM - 4:00 PM

HHW pickup from your home is also available for a fee of \$135 per stop plus \$0.75 per pound of material collected. This fee is paid directly by the resident to ERG Environmental Services.

To confirm drop-off times and/or to schedule a pickup, please contact:

ERG Environmental Services
13040 Merriman Road, Livonia
(734) 437-9650

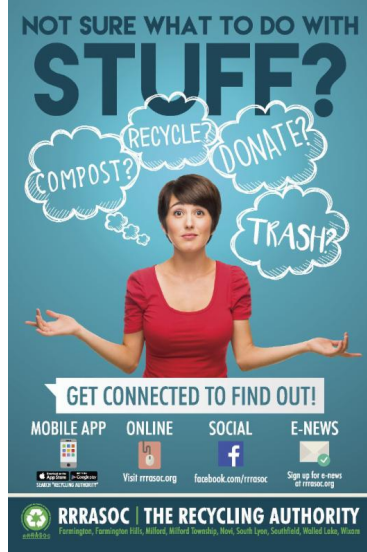


For more info, visit the [ERG HHW Drop-Off page](#) or our [HHW page](#).

RRRASOC Recycling Directory

Not sure what to do with stuff?

Visit rrrasoc.org and use the Recycling



Directory search bar to type in keywords and get recycling, composting, reuse or disposal instructions.

The searchable, intuitive format of the Recycling Directory provides RRRASOC specific information.

Also Available:

Mobile App

- From your App Store or Google Play, search for "Recycling Authority"

Want more tips, tricks, and updates about recycling? We have a Facebook page where we can reach each other to make recycling easier. You can also reach us via RRRASOC.org and email at education@rrrasoc.org!



RRRASOC - Recycling Authority | 248-208-2270 | rrrasoc.org



RRRASOC - Recycling Authority | 20000 West Eight Mile Rd | Southfield, MI 48075 US

[Unsubscribe](#) | [Update Profile](#) | [Constant Contact Data Notice](#)



Try email marketing for free today!