



R·R·R·A·S·O·C

2021 Annual Report

**Member Communities**

**Farmington  
Farmington Hills  
Milford  
Milford Township  
Novi  
South Lyon  
Southfield  
Walled Lake  
Wixom**

**Board of Directors**

**Chairman**

Fred Zorn, City Administrator, Southfield

**Vice Chairman**

Don Green, Township Supervisor, Milford Township

**Treasurer**

Chelsea Pesta, Assistant City Manager, Walled Lake

**Secretary**

Gary Mekjian, Assistant City Manager, Farmington Hills

David Murphy, City Manager, Farmington  
Christian Wuerth, Village Manager, Milford  
Pete Auger, City Manager, Novi  
Paul Zelenak, City Manager, South Lyon  
L. Dennis Whitt, City Manager, Walled Lake  
Steve Brown, City Manager, Wixom

**Designated Board Alternates**

Chuck Eudy, Director, Farmington Department of Public Services  
Karen Mondora, Director, Farmington Hills Department of Public Services  
Mike Karll, Director, Milford Department of Public Services  
Jeff Herczeg, Director, Novi Department of Public Works  
John Michrina, Deputy City Administrator, Southfield  
Tim Sikma, Director, Wixom Department of Public Works

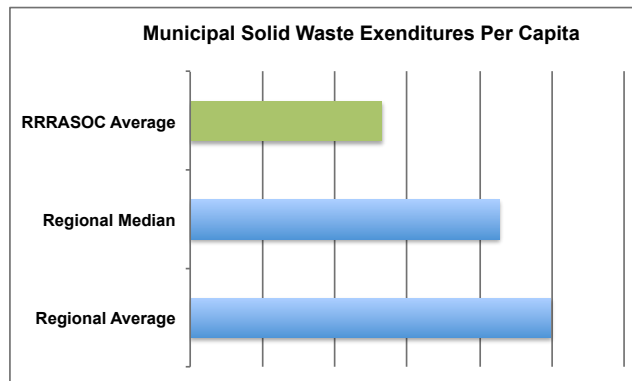
**RRRASOC Staff**

Michael Csapo, General Manager  
Laura Shaw, Administrative Secretary  
Saundra Porter, Education Coordinator

During 2021, RRRASOC, its Member Communities, and the contractors that provide services to our residents continued to demonstrate institutional resiliency, meeting the materials management needs of our residents despite the ongoing difficulties posed by the COVID 19 pandemic, labor shortages, and supply chain disruptions.

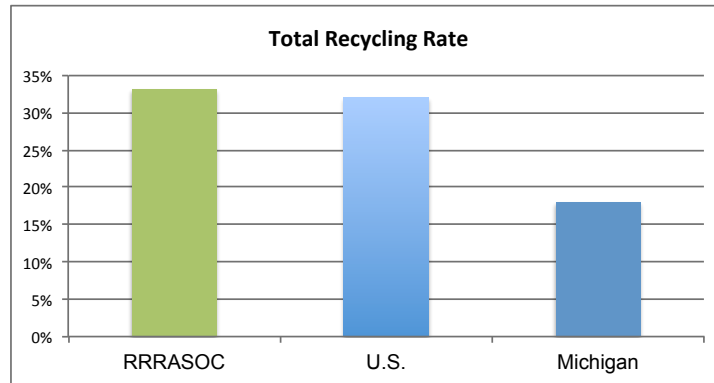
Notable activities last year included:

- RRRASOC and its MRF operating partner, Republic Services, met the continuing operational challenges. The RRRASOC MRF remained one of the highest volume facilities in Michigan, providing important feedstock to the critical supply chain;
- RRRASOC completed Phase One of a project with IRIS Waste Diversion Specialists and The Recycling Partnership to improve material quality and processing safety by reducing recycling contamination, using a \$150,000 Recycling Quality Improvement grant from the Michigan Department of Environment, Great Lakes, and Energy (EGLE). A follow up grant of \$50,000 for Phase Two was additionally awarded;
- Installation of the Michigan EGLE grant-funded security cameras for the Novi Drop Off Center was completed;
- A Michigan EGLE grant of nearly \$65,000 was secured to install a document shredder at the MRF, with completion expected in early 2022;
- The Michigan Department of Agriculture again awarded a \$20,000 Clean Sweep grant to RRRASOC to facilitate the collection of pesticides within our communities;
- RRRASOC worked closely with third party organizations such as The Recycling Partnership, the Carton Council, and the Foodservice Packing Institute to expand recycling and fund educational and promotional material throughout the area;
- RRRASOC assisted four communities in negotiating curbside service contract extensions and helped prepare two communities for soliciting proposals for curbside services in 2022;
- The HHW program set records in terms of both participation and material collected;
- The annual audit by Plante & Moran of the *RRRASOC Financial Report for FY 2020 – 2021* showed that RRRASOC conducted its financial affairs in accordance with generally accepted accounting principles and that the Authority improved its financial position;
- The completion of the *FY 2021 – 2022 Solid Waste Expenditure Benchmark Study* demonstrated the continued cost effectiveness of the programs in the RRRASOC communities.

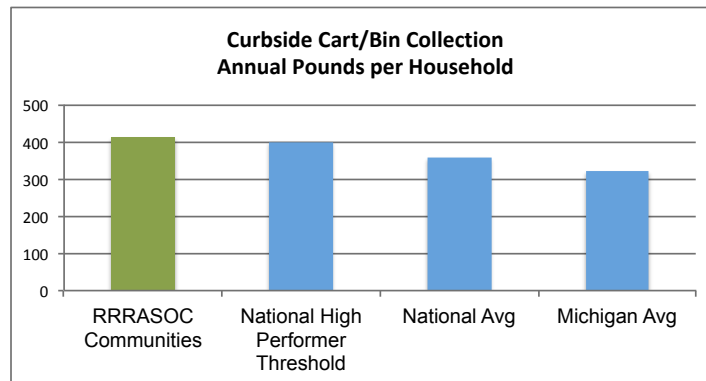


More than 34,000 tons of recyclable and reusable material, yard waste, and household hazardous waste items were collected and diverted from local landfills through the RRRASOC curbside collection, drop-off, and event-based programs.

The combined recycling rate of the RRRASOC communities was 33.5%, which is higher than both the Michigan and national rates.



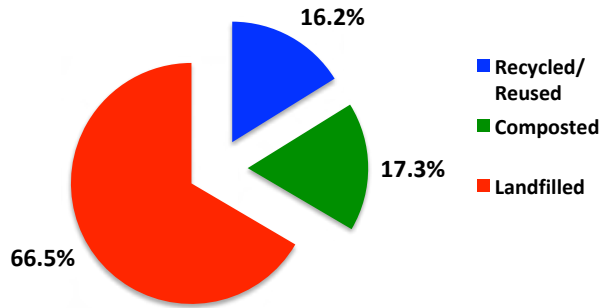
Overall, the RRRASOC communities collected more than 412 pounds per household through their curbside cart/bin collection programs, exceeding the national "High Performer" benchmark, in addition to the national and Michigan averages.



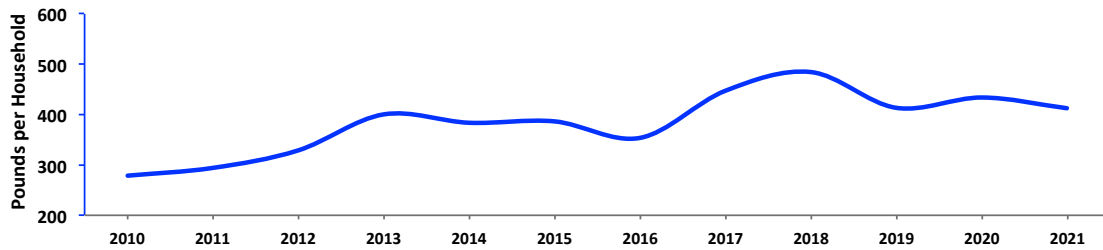
Lifecycle analysis shows that recapturing those resources for value-added economic activity also yielded significant environmental benefits, including the following:

- ♻️ Conserved nearly 164 billion Btu, the equivalent of the annual energy consumption of 1,623 households;
- ♻️ Preserved nearly 123,000 trees;
- ♻️ Reduced waterborne pollution emissions by 69 tons;
- ♻️ Reduced airborne pollution emissions 18,386 metric tons of carbon equivalent.

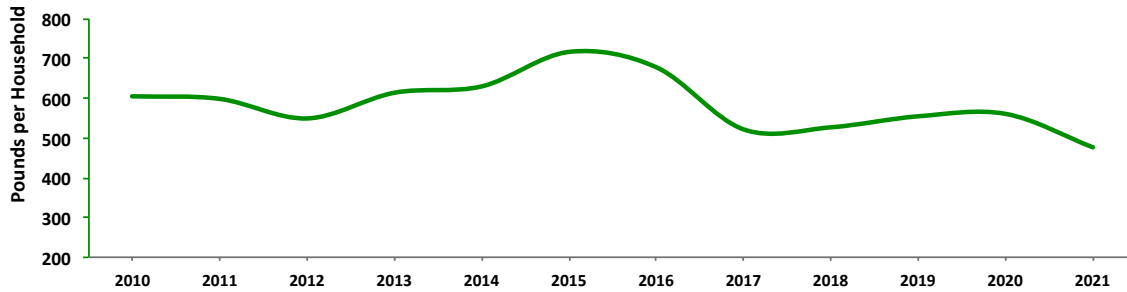
### Solid Waste Disposition: 2021



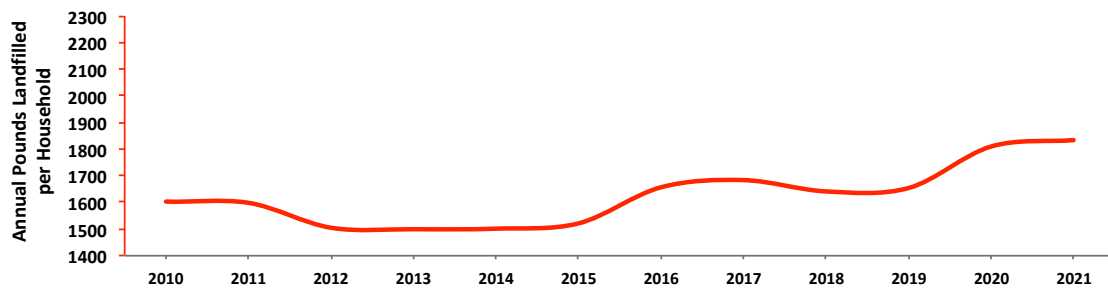
### Recycling History Curbside Collection



### Composting History



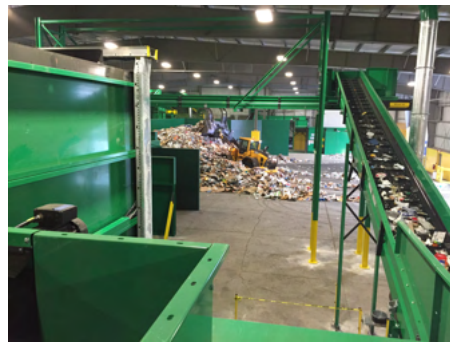
### Waste Generation History



RRRASOC's MRF operating partner, Republic Services, operated the MRF at full capacity, running two production shifts per day, often six days per week, as the MRF continued to serve as the cornerstone for recycling throughout much of southeast Michigan.

Republic Services successfully managed the facility as part of the critical supply chain, with no significant lost operational time due to health, safety, or labor issues.

Overall, the facility processed 68,500 tons of material during the year. Nearly 24% was material from the 74,000 RRRASOC area homes and the RRRASOC drop-off centers. Our communities accounted for more than 16,000 tons of paper, glass, plastic, and metal that was processed at the MRF and shipped throughout the U.S. and abroad, providing valuable feedstock for manufacturers.





RRRASOC's Household Hazardous Waste (HHW) collection program had record-breaking performance in 2021. Nearly 9,000 residents participated in the program taking advantage of the opportunity to recycle and properly dispose of the hazardous material found in their homes, making it the highest year of participation in program history.

Participation was 10.5% higher than the previous record set in 2019 and 17.5% higher than the average for the prior five years. The Wixom spring event had its highest attendance ever, as did the use of the contractor's site for drop off.

Nearly 600,000 pounds of material were collected in 2021, which is 15% more than 2020 and 31% more than the average for the prior five years.

ERG Environmental Services, a local hazardous waste company, handled the material. Disposal and recycling costs through ERG continued to be among the lowest in southeast Michigan. All material was handled in accordance with state and federal laws.

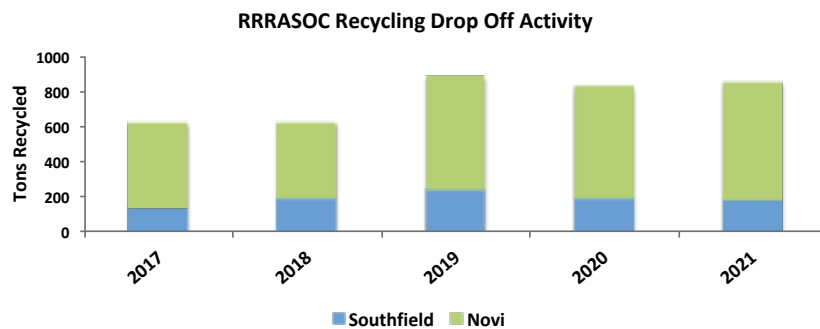


RRRASOC's recycling drop-off centers continued to be a popular recycling option for many throughout the region. Last year, 847 tons were brought to the sites, which is 15% higher than the average for the previous four years.

The drop-off center in Novi accounted for 662 tons of recycling, while the Southfield location contributed another 185 tons.

RRRASOC continued to work with IRIS Waste Diversion Specialists and The Recycling Partnership to conduct analysis and education surrounding the use of the Novi site to reduce contamination and improve material preparation compliance.

RRRASOC also completed the installation of grant-funded cameras at the Novi site to further improve site management, reduce contamination and illicit dumping, and improve site safety.



RRRASOC continued to use a multi-platform approach to community outreach and materials management education. Last year's efforts complemented the communication programs of our individual communities with the following:

- Nearly 100,00 grant-funded, direct mail educational postcards;
- 55,405 first time users of the online Recycling Directory;
- 347,750 material searches using our online Recycling Directory, which was more than four times the number of searches in 2020;
- Downloads of the Recycling Directory mobile application increased by 11%;
- Subscribers to our monthly electronic newsletter increased by more than 16%;
- 761 new resident packets were distributed;
- Improvements were made to RRRASOC's digital and print information by IRIS Waste Diversion Specialists, with design and funding assistance from stakeholder organizations such as The Recycling Partnership, the Carton Council, and the Foodservice Packaging Institute.







**R·R·R·A·S·O·C**

20000 W. 8 Mile Road  
Southfield, MI 48075  
248.208.2270  
248.208.2273 fax  
[www.RRRASOC.org](http://www.RRRASOC.org)